



FABULOUS STONE™



Countless hours of craftsmanship has create the artificial stone veneer of Fabulous wall. Replicates the tiniest detail and color of real stone to an amazing degree and even feel like stone to the touch. Fabulous Walls products are UV resistant, algae and acid resistant. It accommodates almost any traditional or contemporary Design scheme. Their unique pattern, colors and texture creates a discreet and attractive backdoor for a living room, kitchen, dom as an accent on a fire place or outdoors as home siding, on perches, exterior facade of commercial or residential project.

FABULOUS STONE

GIRIRAJ FARM, KHATA NO. 253, SURVEY NO. 192/2 "FABULOUS STONE",
Bhakrol Road, Sarkhej, Ahmedabad, Gujarat, 382210

Mo. : +91-7600933997, +91-9924373098, +91-9376243198, e-mail : shoib.h81@gmail.com

SAND STONE SERIES

SAND STONE : Well-known for its natural beauty and tonal variation, indian sandstone Paving offers unique colour palettes, subtle veining detail and even some plant fossil..



SS01 - SAND STONE



SS02 - SAND STONE



SS03 - SAND STONE



SS04 - SAND STONE



SS05 - SAND STONE



SS06 - SAND STONE



SS07 - SAND STONE





SS08 - SAND STONE



SS09 - SAND STONE



SS10 - SAND STONE



SS12 - SAND STONE



SS13 - SAND STONE



SS14 - SAND STONE



SS15 - SAND STONE



SS16 - SAND STONE



SS17 - SAND STONE



SS18 - SAND STONE



SS19 - SAND STONE



SS20 - SAND STONE



SS21 - SAND STONE



SS22 - SAND STONE



SS23 - SAND STONE



SS24 - SAND STONE



SS25 - SAND STONE



SS26 - SAND STONE



SS27 - SAND STONE



SS28 - SAND STONE

SAND BLAST SERIES

SAND BLAST STONE : fabulous sandblasted engined concrete stone are extremely versatile and come in a variety of deferent colours.



SB01 - SAND BLAST



SB02 - SAND BLAST



SB03 - SAND BLAST



SB04 - SAND BLAST



SB05 - SAND BLAST



SB06 - SAND BLAST



SB07 - SAND BLAST



SB08 - SAND BLAST



SB09 - SAND BLAST



SB10 - SAND BLAST



SB12 - SAND BLAST



SB13 - SAND BLAST



SB14 - SAND BLAST



SB15 - SAND BLAST



SB16 - SAND BLAST



SB17 - SAND BLAST



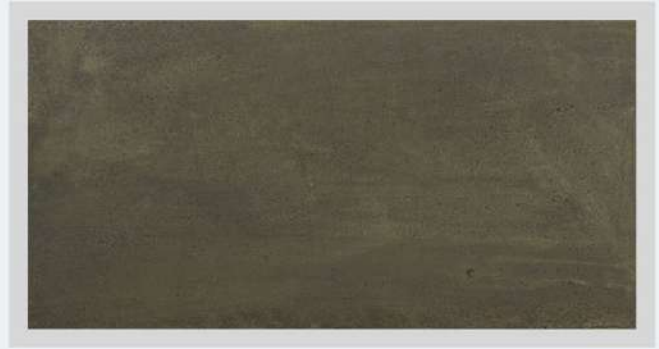
SB18 - SAND BLAST



SB19 - SAND BLAST



SB20 - SAND BLAST



SB21 - SAND BLAST



SB22 - SAND BLAST



SB23 - SAND BLAST



SB24 - SAND BLAST



SB25 - SAND BLAST



SB26 - SAND BLAST



SB28 - SAND BLAST



• CASTLE ROCK SERIES •

CASTLE ROCK : Hand chiseled rectangular sand stone pieces has create dramatic look of finally dressed rock masonry.



CR01 - CASTLE ROCK



CR02 - CASTLE ROCK



CR03 - CASTLE ROCK



CR04 - CASTLE ROCK



CR05 - CASTLE ROCK



CR06 - CASTLE ROCK



CR07 - CASTLE ROCK



CR08 - CASTLE ROCK



CR09 - CASTLE ROCK



CR10 - CASTLE ROCK



CR11 - CASTLE ROCK



CR12 - CASTLE ROCK



CR13 - CASTLE ROCK



CR14 - CASTLE ROCK



CR15 - CASTLE ROCK



CR16 - CASTLE ROCK



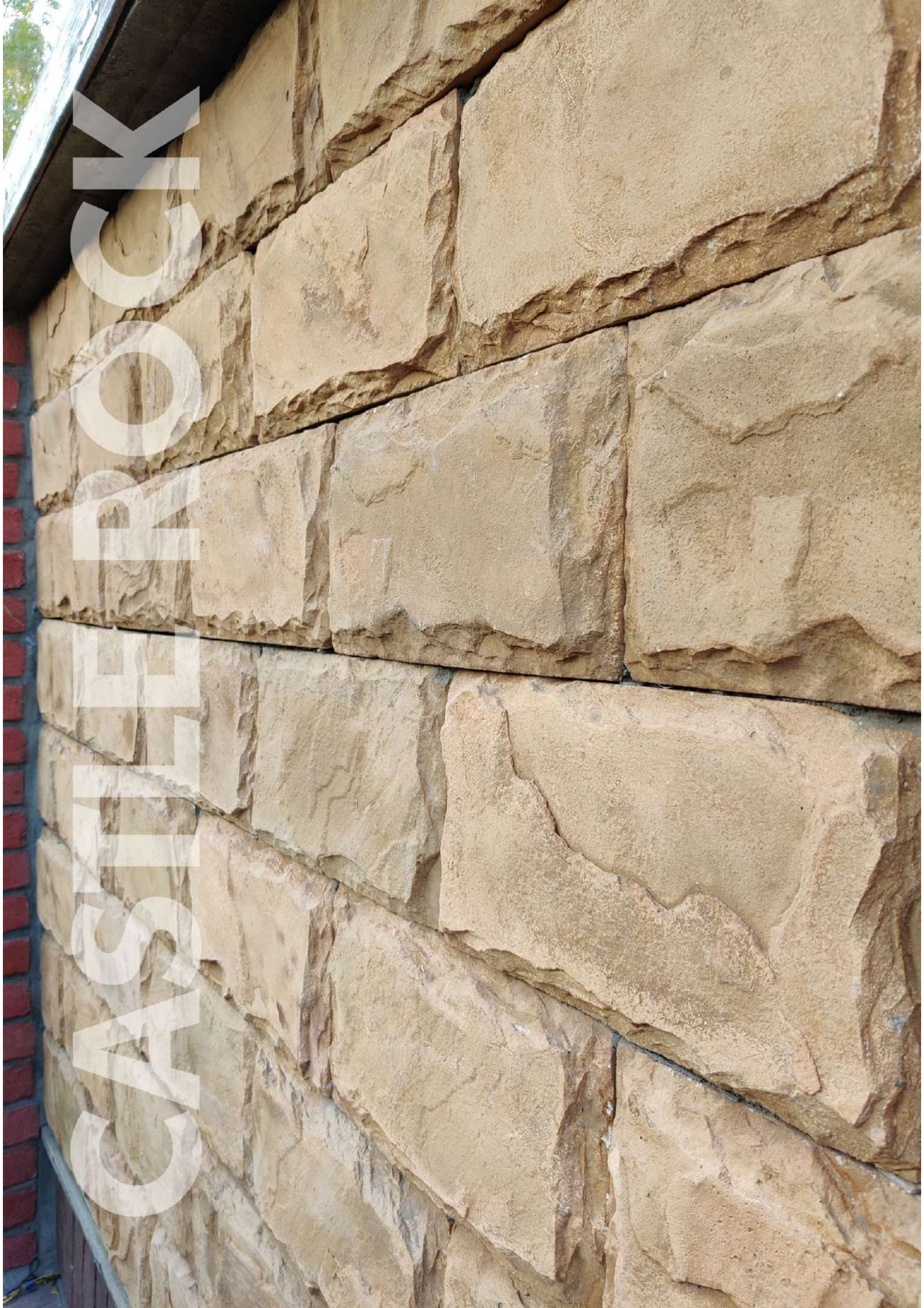
CR17 - CASTLE ROCK



CR18 - CASTLE ROCK



CR19 - CASTLE ROCK



FIELD STONE SERIES

FIELD STONE : Textures and colors of field stone look like they were pull straight from the country side.This is because of dedicated hard work of our artists make it natural organic shape and colors.



FS01 - FIELD STONE



FS02 - FIELD STONE



FS03 - FIELD STONE



FS04 - FIELD STONE



FS05 - FIELD STONE



FS06 - FIELD STONE



FS07 - FIELD STONE



FS08 - FIELD STONE



CYPRESS LEDGE SERIES

CYPRESS LEDGE : Combination of hand chiseled linear pieces of varying shape, colors ,texture andgrouting between every piece of stone gives perfect rustic look for your space.



CY01 - CYPRESS LEDGE



CY02 - CYPRESS LEDGE



CY03 - CYPRESS LEDGE



CY04 - CYPRESS LEDGE



CY05 - CYPRESS LEDGE



CY06 - CYPRESS LEDGE



CYPRUS LETTER SOCIETY

FABULOUS STONE



FABULOUS STONE

• TECHNICAL SPECIFICATION •

- **SAND STONE SERIES** : approx depth up to 30 mm
- **SAND BLAST SERIES** : approx depth up to 30 mm
- **CASTLE ROCK SERIES** : approx depth up to 90 mm
- **FIELD STONE SERIES** : approx depth up to 75 mm
- **CYPRUS LEDGE SERIES** : approx depth up to 70 mm

Note :

- some images shown in broucher are just for the illustration of brick work projects.
- product colours are illustrated as accurately as photographic & digital reproduction techniques allow. Final color selection should be made from actual product sample. Because Fabulous Stone replicates natural stone, Variations should be expected.

FABULOUS STONE

GIRIRAJ FARM, KHATA NO. 253, SURVEY NO. 192/2 "FABULOUS STONE",
Bhakrol Road, Sarkhej, Ahmedabad, Gujarat, 382210

Mo. : +91-7600933997, +91-9924373098, +91-9376243198, e-mail : shoib.h81@gmail.com

visit us : www.fabulousstone.co.in

follow us : [f /fabulousstoneindia](https://www.facebook.com/fabulousstoneindia) [i /fabulousstoneindia](https://www.instagram.com/fabulousstoneindia)